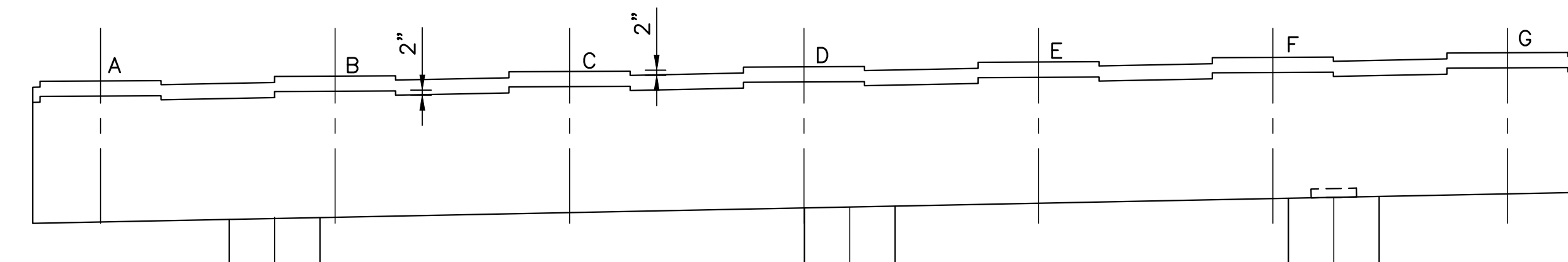
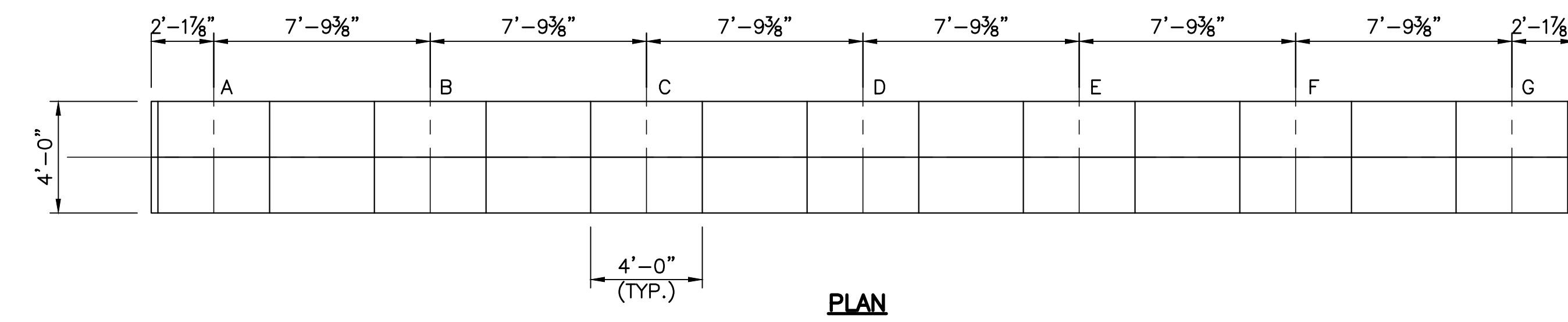
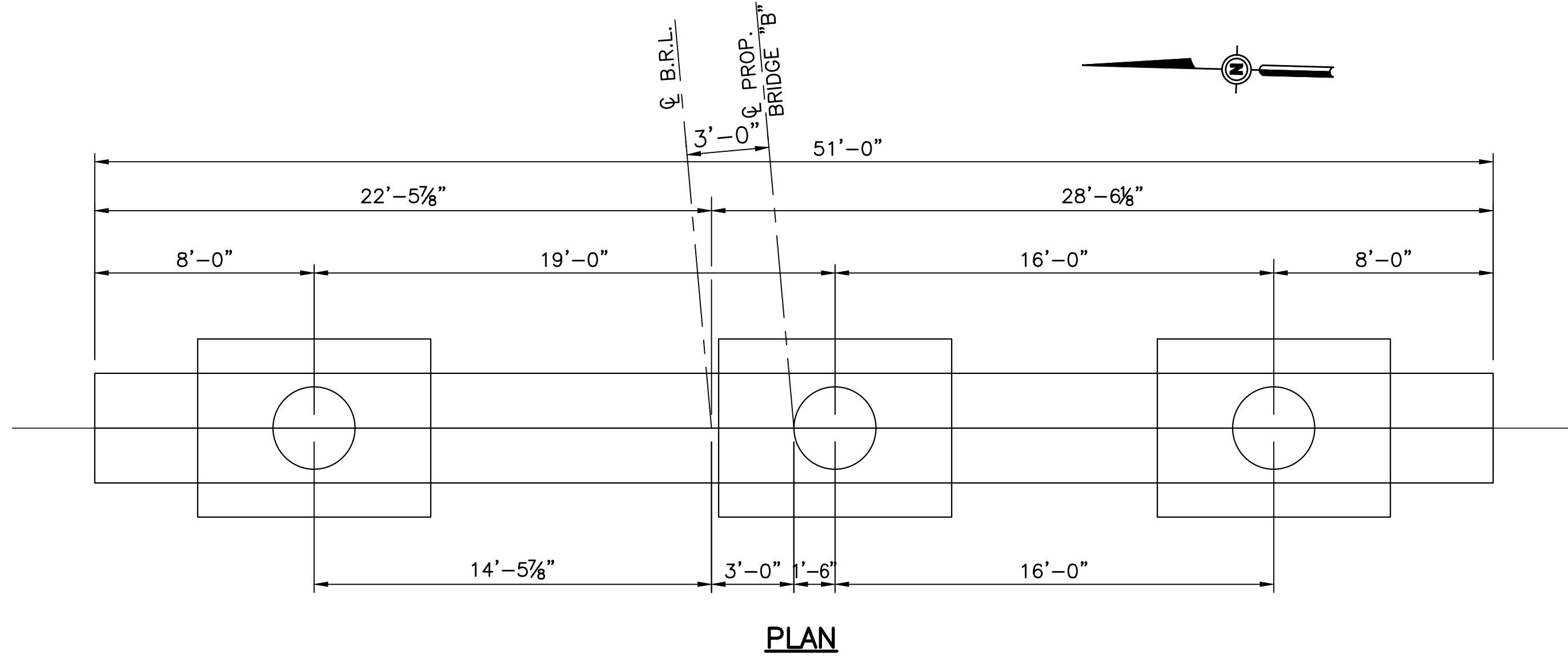
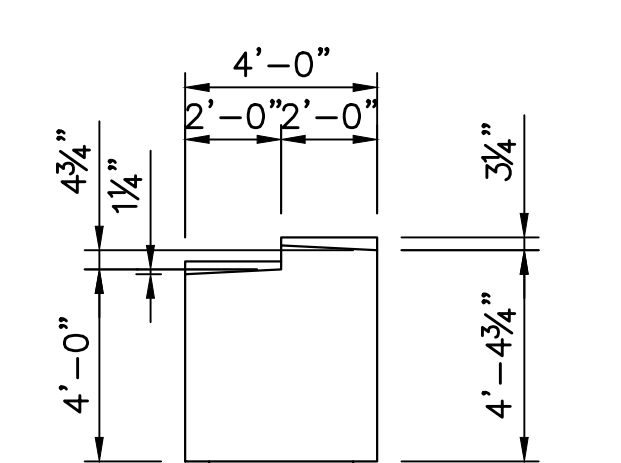
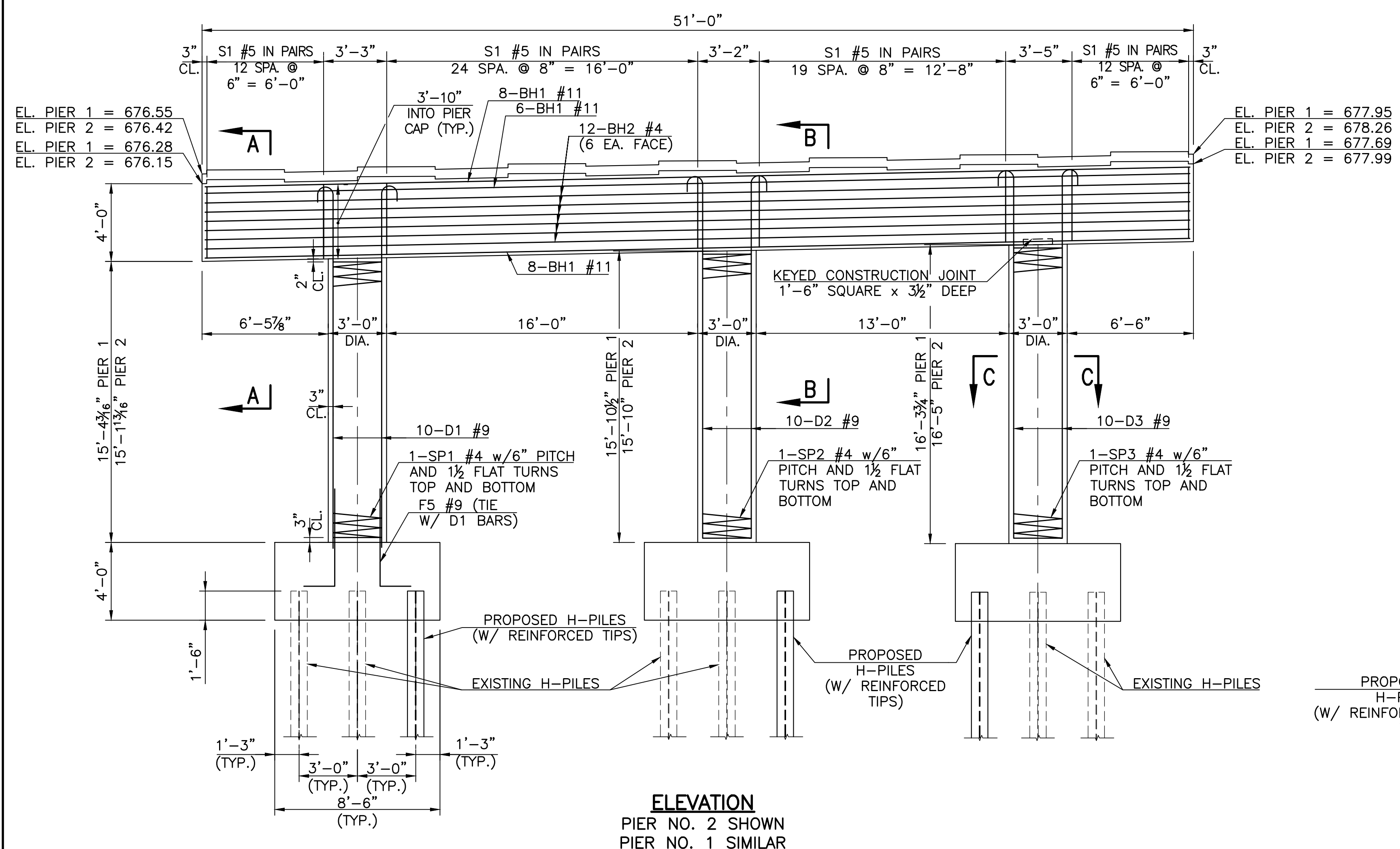


| REVISIONS | | |
|-----------|-------------|---------|
| REV. NO. | DESCRIPTION | DATE |
| 1 | TABLE NAME | 9/14/17 |



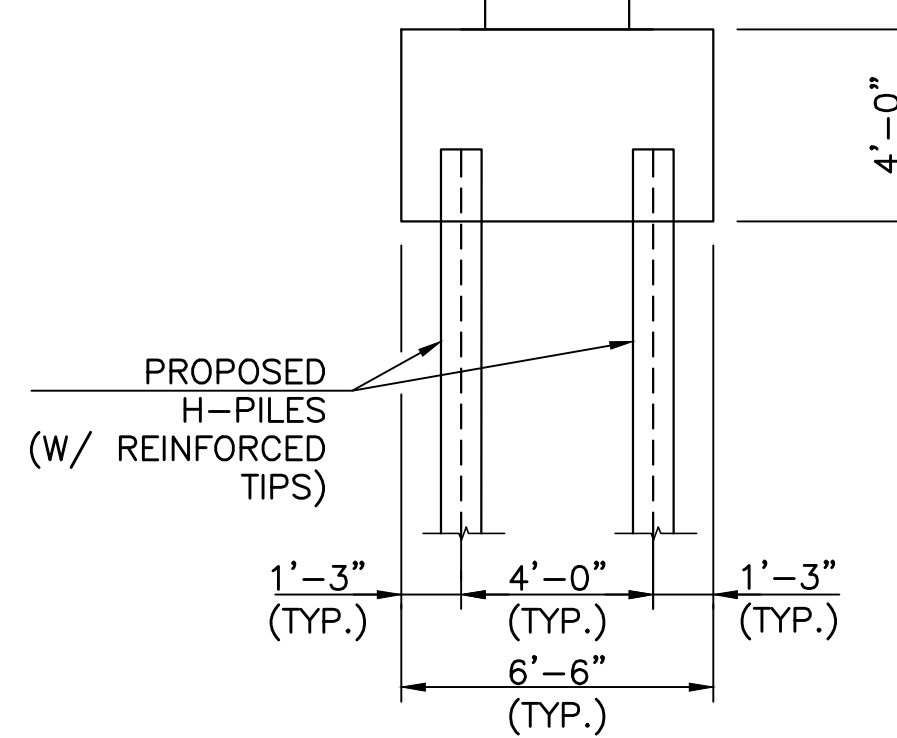
**ELEVATION
PEDESTAL LAYOUT**
PIER NO. 2 SHOWN
PIER NO. 1 SIMILAR



| ELEVATION AT BEARING SEAT-BRIDGE "B" | | | | | | | |
|--------------------------------------|--------|--------|--------|--------|--------|--------|--------|
| Description | A | B | C | D | E | F | G |
| ABUT 1 | 676.72 | 676.91 | 677.10 | 677.28 | 677.46 | 677.65 | 677.83 |
| PIER 1 - W27 | 676.77 | 676.99 | 677.21 | 677.42 | 677.64 | 677.85 | 678.06 |
| PIER 1 - W30 | 676.50 | 676.72 | 676.94 | 677.15 | 677.37 | 677.58 | 677.79 |
| PIER 2 - W30 | 676.40 | 676.68 | 676.96 | 677.24 | 677.52 | 677.80 | 678.08 |
| PIER 2 - W27 | 676.67 | 676.95 | 677.23 | 677.51 | 677.79 | 678.07 | 678.35 |
| ABUT 2 | 676.53 | 676.84 | 677.15 | 677.46 | 677.77 | 678.08 | 678.39 |

| BRIDGE "B" PIER 1 BAR LIST | | | | |
|----------------------------|------|------|--------|---------|
| MARK | SIZE | FORM | NUMBER | LENGTH |
| EPOXY COATED | | | | |
| BH1 | #11 | STR. | 22 | 50'-6" |
| BH2 | #4 | STR. | 15 | 50'-6" |
| BH3 | #4 | BNT. | 12 | 5'-8" |
| D1 | #9 | BNT. | 10 | 20'-3" |
| D2 | #9 | BNT. | 10 | 21'-0" |
| D3 | #9 | BNT. | 10 | 21'-5" |
| S1 | #5 | BNT. | 142 | 13'-3" |
| SP1 | #4 | SPR. | 1 | 265'-2" |
| SP2 | #4 | SPR. | 1 | 273'-6" |
| SP3 | #4 | SPR. | 1 | 280'-4" |
| U1 | #4 | BNT. | 52 | 5'-8" |
| F1 | #6 | BNT. | 21 | 10'-0" |
| F2 | #9 | BNT. | 30 | 11'-2" |
| F3 | #6 | BNT. | 27 | 8'-0" |
| F4 | #6 | BNT. | 39 | 8'-0" |
| F5 | #9 | BNT. | 30 | 6'-7" |

| BRIDGE "B" PIER 2 BAR LIST | | | | |
|----------------------------|------|------|--------|----------|
| MARK | SIZE | FORM | NUMBER | LENGTH |
| EPOXY COATED | | | | |
| BH1 | #11 | STR. | 22 | 50'-6" |
| BH2 | #4 | STR. | 15 | 50'-6" |
| BH3 | #4 | BNT. | 12 | 5'-8" |
| D1 | #9 | BNT. | 10 | 20'-3" |
| D2 | #9 | BNT. | 10 | 20'-0" |
| D3 | #9 | BNT. | 10 | 21'-7" |
| S1 | #5 | BNT. | 142 | 13'-3" |
| SP1 | #4 | SPR. | 1 | 262'-1" |
| SP2 | #4 | SPR. | 1 | 272'-10" |
| SP3 | #4 | SPR. | 1 | 282'-0" |
| U1 | #4 | BNT. | 52 | 5'-8" |
| F1 | #6 | BNT. | 21 | 10'-0" |
| F2 | #9 | BNT. | 30 | 11'-2" |
| F3 | #6 | BNT. | 27 | 8'-0" |
| F4 | #6 | BNT. | 39 | 8'-0" |
| F5 | #9 | BNT. | 30 | 6'-7" |



SIDE VIEW
PIER NO. 2 SHOWN
PIER NO. 1 SIMILAR

NOTES:
EXISTING LIGHT POLE IS TO BE REMOVED AND REPLACED AT SOUTH END OF PIER NO. 2. POLE IS TO BE REATTACHED TO PROPOSED PIER CAP USING THE STANDARD BRACKET (SEE STD. PMBD1-1-00).

CONTRACTOR SHALL COMPACT BACKFILL TO 95% STANDARD DENSITY WHEN BACKFILLING PIER FOOTINGS.

| BRIDGE "B" PIER QUANTITIES | | | |
|--------------------------------------|------|----------|----------|
| ITEM | UNIT | PIER 1 | PIER 2 |
| CLASS A CONCRETE | C.Y. | 69.6 | 69.5 |
| EPOXY COATED REINFORCING STEEL | LB. | 15,189.0 | 15,151.0 |
| PILES, DRIVEN (HP10X42) | L.F. | 192.0 | 198.0 |
| PILES, FURNISHED (HP10X42) | L.F. | 192.0 | 198.0 |
| WATER REPELLENT (VISUALLY INSPECTED) | S.Y. | 84.0 | 84.0 |

TULSA COUNTY OKLAHOMA DEPARTMENT OF TRANSPORTATION
 DESIGN MW 11/16
 DRAWN SDK 11/16
 CHECKED HRA 11/16
 APPROVED
 WALTER P MOORE
**DETAILS OF PIERS
BRIDGE "B"
(SHEET 1 OF 2)**
 STATE JOB NO. 28884(04) SHEET NO. 45

V:\MPS\2017\2000-07 0000 E-1414 US-64 Item 3\Comp\Draw\2017-09-14-12-0001-07-PIERS.dwg Sep 14, 2017 - 12:29pm S:\m\k